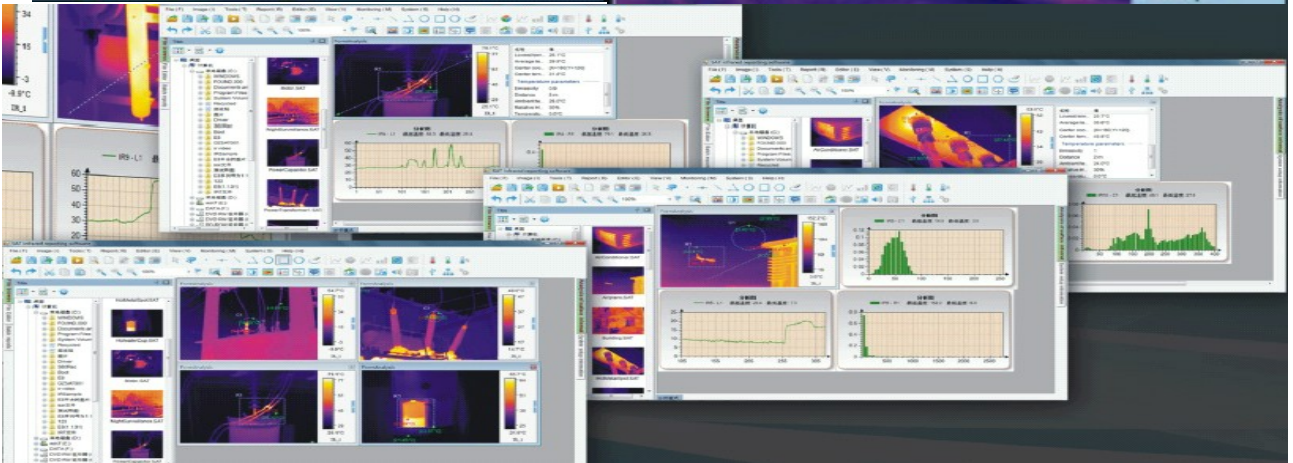
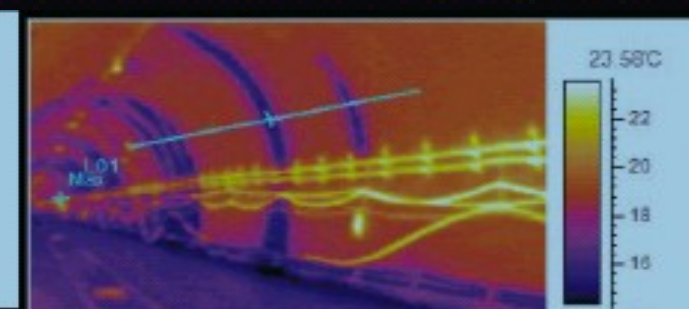
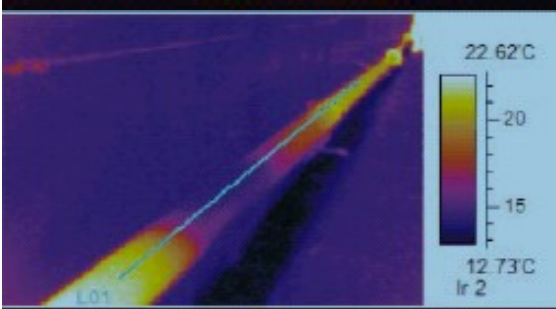
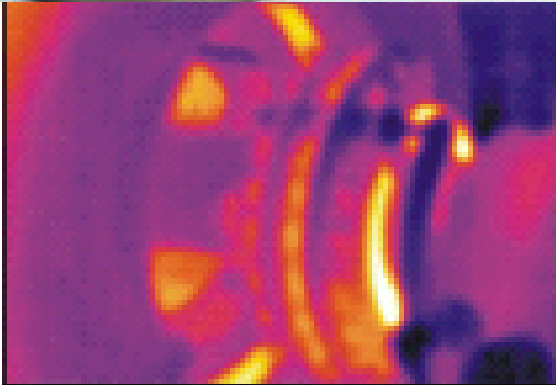




DON –CK350W/VW



		W	VW/ Dual Vision
THERMAL VISION	Detektor type:	FPA, Uncooled Microbolometer	FPA, Uncooled Microbolometer
	Detektor scale:	384 x 288	384 x 288
	Spectral Range	8 ~ 14 μm	8 ~ 14 μm
	NETD	0,05°C@30°C	0,05°C@30°C
	FOV:	24° x 18°	24° x 18°
	Spatial Resolution	1.13mrad	1.13mrad
	Focus range:	AF/motorized	AF/motorized
	Digital Zoom:	Yes	Yes
Visual Image System Feature	Start-up time:	< 20s	< 20s
	Control mode:	RS485	RS485
	Brightness/contrast:	Auto	Auto
		N/A	795x596/ 10x Optical Zoom
	Video Out:	Rj45 Ethernet + Composite Video, Standard PAL	Rj45 Ethernet + Composite Video, Standard PAL
	Power Supply:	12VDC/24VAC/PoE	12VDC/24VAC/PoE
	Power Dissipation:	15W/75W	15W/75W
Climatic Environment:	Operating:	-30°C - +50°C	-30°C - +50°C
	Storage:	-40 °C - +70°C	-40 °C - +70°C
Mechanical	weight	4 Kg	
	Size (mm)	376x136x103/IP66	
Range Performance (With Standard lens)	Vehicle:	Detection:	1000m
		Recognition:	330m
	Man:	Detection:	350m
		Recognition:	150m



DoNet AB Ranhammarsvägen 18, S-161 11 Bromma Sweden

Tel. + 46 (0) 8 564 355 50