

# ECZ 330

## 1/3" Day/Night Camera with IR-LED, high resolution



### Specifications

**Sensor:** 1/3" SONY CCD  
**Picture element:** 752 x 582 (PAL)  
**Horizontal resolution:** 480 TV lines  
**Sensitivity:** 0,5 lux / F = 1.2 (IR-LED off)  
**IR - LED:** 14 x, controlled by internal twilight switch  
**IR - LED lifetime:** up to 50.000 h  
**IR - Range:** 5~20m\*  
**Video output:** 1 Vp-p composite PAL  
**S/N ratio:** over 48 dB  
**Gamma correction:** 0,45  
**Synchronisation:** internal  
**Back light compensation:** yes  
**Auto white balance:** yes  
**AGC:** yes  
**Electronic shutter:** auto 1:50 ~ 1:100.000

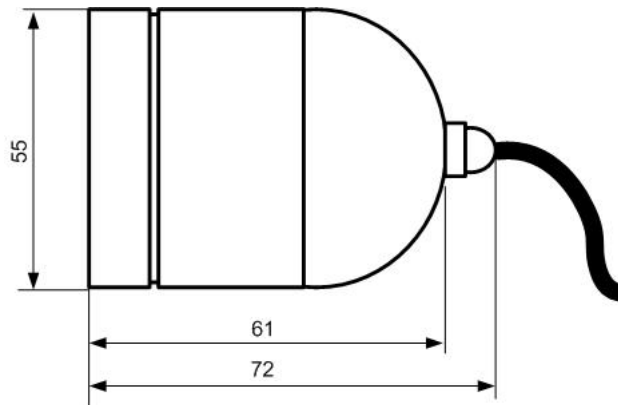
**Lens:** 4,3mm / F2 , M12 x P0,5

**Mounting:** 1/4" mounting hole at lower and upper side for camera bracket (included)

**Casing:** aluminium  
**Weatherproof rating:** IP 66

**Power source:** 12 V DC +/- 10%  
**Power consumption:** 6 W max.

**Ambient temperature:** -10°C ~ +50°C  
**Dimensions:** without sunshield: 55 (diam.) x 72 (D) mm  
with sunshield: 62 (W) x 58,5 (H) x 82 (D) mm  
**Weight:** 245 g



\* The IR illumination range depends on the location, particularly with regard to the reflections of the installation's surroundings. Locating the device near highly absorbent surfaces can result in a significantly reduced range.