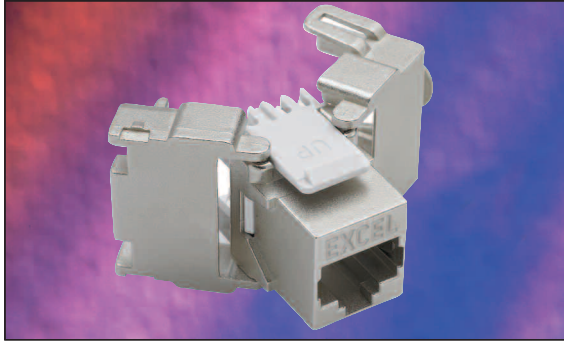


## Excel Category 6a Shielded Twisted Pair (FTP) Keystone Jack – Toolless



25 Year System Warranty

Toolless Termination

Supports 10 Gigabit Ethernet

360° Shielding -Die cast housing

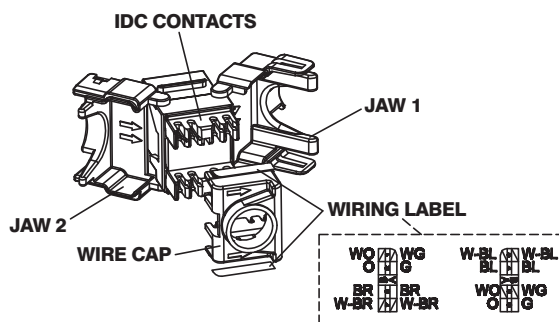
EC verified

### Features

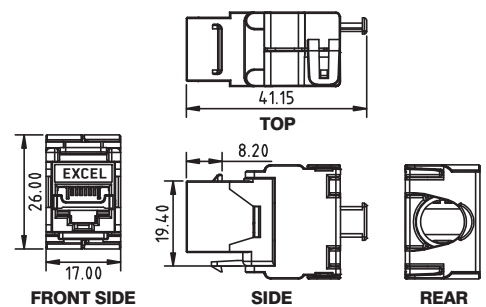
- High quality die cast housing
- Toolless termination design
- Suitable for patch panel and faceplate mounting
- Suitable for 10 Gigabit, 10GBase-T, Ethernet application
- Suitable for installation in 37mm deep back box with bevelled faceplate
- Lifetime Product Warranty
- 25 year system warranty
- 360° Shielding protects against alien crosstalk

### Product Overview

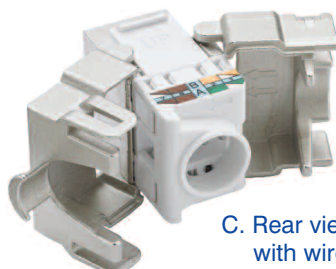
The Excel Category 6a Shielded Twisted Pair (F/FTP) Keystone Jack, is a toolless termination RJ45 socket suitable for mounting in range of housings from patch panels, faceplates and shutters to sub floor boxes, and work area distribution enclosures. The socket itself is housed in a high quality zinc die cast housing, which opens at the rear in a butterfly manner to reveal the IDC termination points. Once the conductors of the cable to be terminated are fed into a management cap the process is completed by snapping the 'butterfly wings' together with minimal, but firm pressure. A choice of Patch Panel frames with either 16 or 24 port density in both black and chrome are available.



A. Rear view of Keystone



B. Keystone profiles. Dimensions in mm



C. Rear view of Keystone with wire cap attached



D. Keystone Jacks mounted in chrome style patch panel, Part No 100-028

## Performance Overview

The Excel Category 6a keystone jack is designed and manufactured to comply with the channel requirements of Augmented Category 6/Class Ea specifications as defined in ISO 11801 2nd edition amend 1.1, and EIA/TIA568B.2.1 standards. A range of performance characteristics are tested upto 500MHz including return loss, attenuation, and near end cross talk (NEXT) and far end cross talk (FEXT). Both worst case and power sum test methods are applied. The product design incorporates staggered 50 micron plated contact pins within the jack to ensure optimum performance levels are achieved, the die cast housing around the terminated pairs ensures Alien Crosstalk is minimised. Support of emerging applications such as 10 Gigabit Ethernet is guaranteed over channel distances of upto 100 metres. The keystone jack is fully interoperable and backward compatible with Category 5e and Category 6 products.

## Performance / Specification Table

Specification	Category 6a ISO/IEC 11801 Class Ea, TIA/EIA-568B.2-10
Wiring Specification	TIA 258A/568B
Dimensions	17mm wide x 41.15mm deep x 26mm high
Installation Recommendation	Suits minimum of 37mm Back Boxes when installed with Bevelled Faceplate
RJ45 Jack	Min life 750 insertions
RJ45 Jack	50 Micron Gold Plated contact pins
NEXT at 500MHz	Category 6a 39.10dB @500MHz (Power Sum)
EL FEXT at 500MHz	Category 6a 27.00dB @500MHz (Power Sum)

Electrical performance meets or exceeds channel requirements as defined in the latest Category 6a , specification documents, ISO/IEC 11801: 2002 Class Ea amendment, and TIA-568-B.2-10, when installed with Excel Category 6a cable.

## System Warranty

When installed with Excel Category 6a Cables by an accredited Excel Cabling Partner this product is supported by a comprehensive 25 year product and applications warranty.

## Typical Applications

- IEEE802.3 1000 Base-TX Gigabit Ethernet
- IEEE802.3an 10G Base-T Gigabit Ethernet
- Digital and analogue video
- 1.2/2.4Gbs ATM

## Part Number Information

Part No.	Description
100-180	Excel Category 6a FTP Butterfly Style Toolless Jack

**EC verified.** This product has been tested by the Delta EC Cabling Group and complies with the following standards - ISO/IEC 11801:2002 amendment 1 Class Ea, ISO/IEC TR 24750, ANSI/EIA/TIA-568-b.2-10 and ANSI/TIA/EIA TSB-155. For copies of test certification please contact your local Excel distributor, or visit [www.excel-networking.com](http://www.excel-networking.com) or [www.delta.dk](http://www.delta.dk). Delta technical report N312480, Danak -19J1944 screened 4 connector channel model.



## Part Number Information – Mounting Hardware

Part No.	Description
100-014	Shuttered facia, 50x25mm, Euromod
100-018	Shuttered facia, 38x22.5mm, 6c
100-025	Unloaded 16 port Black patch panel frame
100-026	Unloaded 24 port Black patch panel frame
100-027	Unloaded 16 port Chrome patch panel frame
100-028	Unloaded 24 port Chrome patch panel frame

NB. All patch panels are supplied with cage nuts, earth cable, and rear management tray



Excel is a complete, end-to-end networking solution, offering exceptional performance and support, manufactured to European quality standards and covered by one warranty.

Contact us at [sales@excel-networking.com](mailto:sales@excel-networking.com)

[WWW.EXCEL-NETWORKING.COM](http://WWW.EXCEL-NETWORKING.COM)