

Excel Plus Keystone Jack Patch Panel Frame

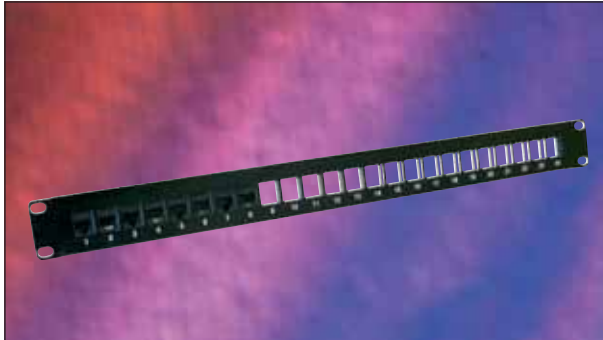


Photo shows panel partially loaded. Panel is supplied unloaded.

25 Year System Warranty

Suits Excel Cat 5e & Cat 6

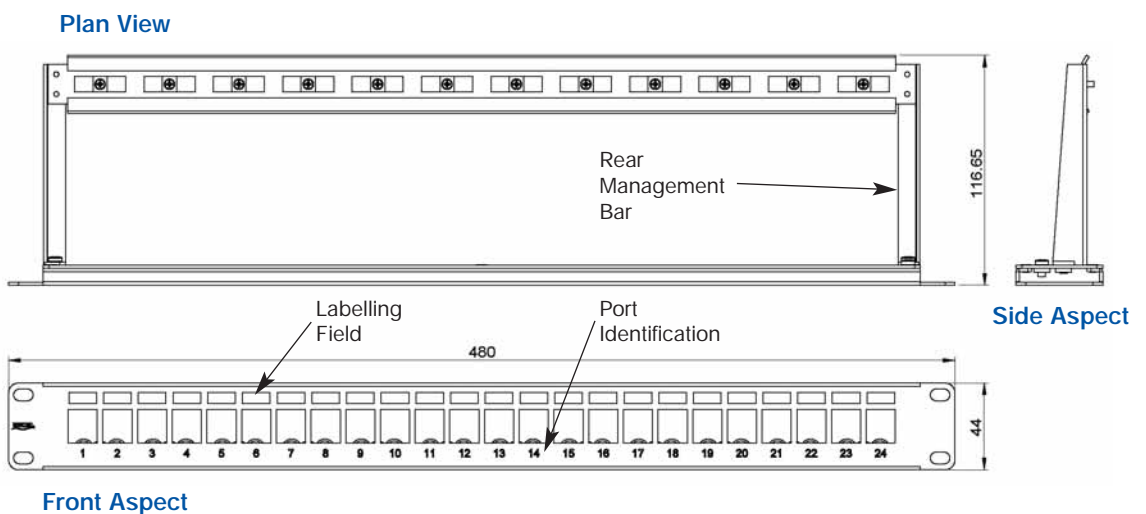
Features

- Supplied unloaded
- Load from 1 to 24 keystone jacks
- Suits category 5e and 6 UTP Excel Jacks
- 25 Year System Warranty
- BSRIA Number 1 private label, by market share for the last three years

Product Overview

The Excel Plus 24 port 1u empty black patch panel allows for flexible port density from 1 through to 24 ports. The panel is suitable for both Cat5e and Cat6 keystone jacks and comes complete with a rear management bar.

The Excel Plus Cat6 patch panel frame offers great flexibility either through part loading to suit the installations and manage cost, or for pre-terminated requirements, allowing terminated jacks to be snapped into place quickly and easily.



Performance Overview

When installed with Excel Category 5e unshielded keystone jack outlets the Excel Jack Patch Panel frame is manufactured and tested to the current Category 5 enhanced standards as defined by the EIA/TIA and ISO standards' bodies. Swept frequency tests are applied to each critical performance characteristic, such as near end cross talk (NEXT) and far end cross talk (FEXT). Both Worst Case and Power Sum Test methods are applied. Actual performance exceeds the required standard by a considerable margin ensuring sufficient headroom for even the most demanding applications.

When installed with Excel Category 6 unshielded keystone jack outlets the Excel Jack Patch Panel frame is manufactured and tested to the Category 6 performance standards defined by the EIA/TIA, ISO and EN standards bodies. A range of performance characteristics are tested up to 250MHz including return loss, attenuation and near and far end crosstalk (NEXT and FEXT) for which both worst case and power sum tests are completed. Actual performance far exceeds the required standard – when tested in isolation and in circuit – resulting in significant headroom for even the most demanding of applications.

As well as providing link and channel compliance – when installed with Excel category 6 components – with the aforementioned specification – the box is also backward compatible with Category 5 and 5e components.

Performance / Specification Table

| | |
|------------------------------|--|
| Dimensions: | 480mm wide x 116.65mm deep x 44.2mm high |
| Port Density: | 24 |
| Installation Recommendation: | Suits standard EIA 19" rack |

System Warranty

When installed with Excel Plus Category 5e or Cat6 Unshielded Keystone Jack Outlets and Excel Patch leads and Excel Cable by an accredited Excel Cabling Partner, this product is supported by a comprehensive 25 year product and applications warranty.

Typical Applications

- 10 Base-T
- 100 Base-TX
- Token Ring
- 1000 Base T Gigabit Ethernet
- 155 Mbps ATM
- 622 Mbps ATM

Part Number Information

| Part No. | Description |
|----------|---|
| 100-012 | Excel Plus 24 Port Black Empty Patch Frame to take Cat5e or Cat6 keystone jacks |



Excel is a complete, end-to-end networking solution, offering exceptional performance and support, manufactured to European quality standards and covered by one warranty.

Contact us at sales@excel-networking.com

WWW.EXCEL-NETWORKING.COM