

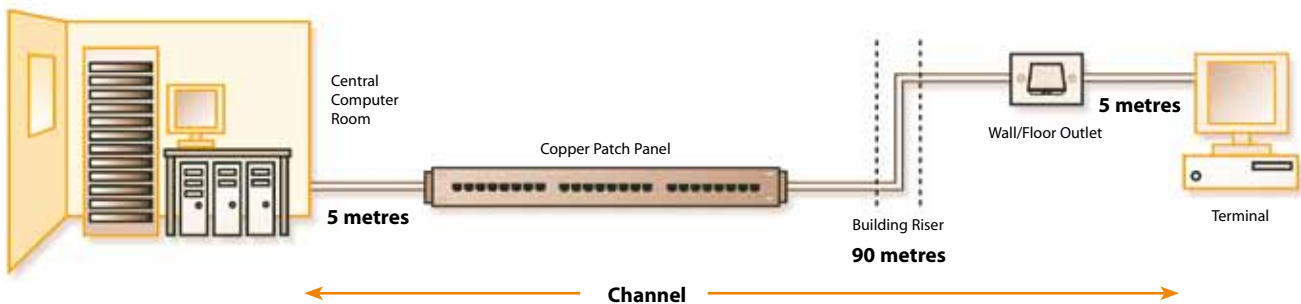
## The GigaPlus System

Structured wiring systems comprised of GigaPlus cables, patch cords and connectivity are designed to be compliant with the current sets of Class D / Category 5e published standards requirements as an absolute minimum. The systems support all protocols defined in current editions, and amendments, of ISO 11801 : 2002, ANSI TIA/EIA 568B.2 : 2002 and EN50173-1-1 : 2002 (including Gigabit Ethernet) and are fully backward compatible.

GigaPlus is a premium grade cabling system that is characterised to 200MHz. Its performance significantly exceeds the requirements specified in the current versions of the published standards for Class D / Category 5e.

### Brand-Rex Copper Cables - GigaPlus Channel Performance

Shielded and Unshielded Systems



### 4 Connector Channel Performance

Frequency (MHz)		1	4	10	16	20	31.25	62.5	100	125	155	175	200	250
Attenuation (dB)	Typical	2.0	4.0	6.4	8.1	9.1	11.5	16.6	21.3	24.0	27.0	28.8	31.0	32.5
	Spec	2.3	4.6	7.3	9.3	10.4	13.2	19.1	24.7	na	na	na	na	na
NEXT (dB)	Typical	73.6	62.3	54.9	51.0	49.2	45.5	39.8	35.9	34.0	32.2	31.2	30.1	30.1
	Spec	60.0	53.5	47.0	43.6	42.0	38.7	33.6	30.1	na	na	na	na	na
PSNEXT (dB)	Typical	70.6	59.3	51.9	48.0	46.2	42.5	36.8	32.9	31.0	29.2	28.2	27.1	29.7
	Spec	57.0	50.5	44.0	40.6	39.0	35.7	30.6	27.1	na	na	na	na	na
Return Loss (dB)	Typical	22.0	22.0	22.0	22.0	22.0	20.1	17.1	15.0	14.0	13.1	12.6	12.0	11.8
	Spec	17.0	17.0	17.0	17.0	17.0	15.1	12.1	10.0	na	na	na	na	na
ELFEXT (dB)	Typical	70.0	57.9	50.0	45.9	44.0	40.1	34.1	30.0	28.0	26.2	25.1	24.0	26.4
	Spec	57.4	45.3	45.3	33.3	31.4	27.5	21.5	17.4	na	na	na	na	na
PSELFEXT (dB)	Typical	67.0	54.9	47.0	42.9	41.0	37.1	31.1	27.0	25.0	23.2	22.1	21.0	24.6
	Spec	54.4	54.4	37.4	30.3	28.4	24.5	18.5	14.4	na	na	na	na	na
Propagation Delay (ns)	Typical	520	510	505	503	502	501	500	500	500	500	500	500	505
	Spec	<555	<555	<555	<555	<555	<555	<555	<555	na	na	na	na	na
Delay Skew (ns)	Typical	<20	<20	<20	<20	<20	<20	<20	<20	<20	<20	<20	<20	<20
	Spec	<50	<50	<50	<50	<50	<50	<50	<50	na	na	na	na	na
ACR (dB/100m)	Typical	71.6	58.3	48.5	42.9	40.0	34.0	23.2	14.6	10.0	5.2	2.4	-0.9	-0.8
PSACR (dB/100m)	Typical	68.6	55.3	45.5	39.9	37.0	31.0	20.2	11.6	7.0	2.2	-0.6	-3.9	-1.5
Alien NEXT (dB)	Typical	103.6	92.3	84.9	81.0	79.2	75.5	69.8	65.9	64.0	62.2	61.2	60.1	59.2