

# rayMAX 25

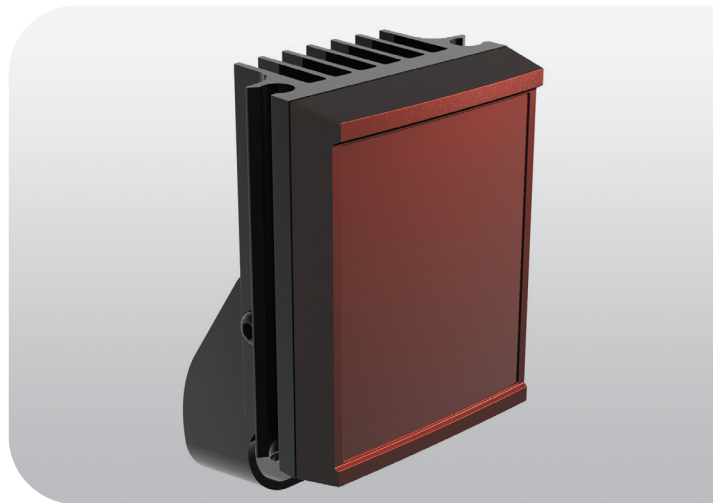
## INFRA-RED PRODUCT RANGE

The RAYMAX series of High Performance Infra-Red LED illuminators provide class leading performance, long life and ultra low maintenance. They incorporate the very latest surface mount LED's to deliver excellent night-time pictures with improved optical output and outstanding reliability.

Purpose designed to provide even output illumination, RAYMAX 25 is available in a number of different fixed angle variations to handle most standard installations.

Each unit is fitted with a Cool Running™ thermal management system to carefully control LED output and delivers a projected working life of 10 years.

RAYMAX illuminators are supplied with bracket and power supply. Control features on the power supply include adjustable power output, photocell and telemetry control. RAYMAX 25 is suitable for all low light installations up to 20 metres (65ft).



### POWERFUL

- Distances up to 20m (65ft)
- Latest LED technology

### FLEXIBLE

- 30, 50 or 120 degree variations
- Fully Controllable Power Supply

### RELIABLE

- 10 year life
- Cool Running™ thermal management system

### CONTROLLED

- Zero Light Pollution
- Even Output Illumination
- Semi-Covert or Covert Options

rayTEC®

[www.rayteccctv.com](http://www.rayteccctv.com)

### ADAPTIVE ILLUMINATION™

Designed for RAYMAX Infra-Red and RAYLUX White-Light illuminators, Adaptive Illumination™ allows the installer to adjust the angle of the light projection from a single unit to fit the specific demands of any installation. Adjustment is quick and convenient and any angle from 30-60 degrees is easily selectable. Adaptive Illumination is patent pending technology available exclusively from Raytec.

### COOL RUNNING™ Thermal Management System

Cutting edge materials science techniques have been employed to improve thermal efficiency throughout the unit. Cool Running™ is specifically designed to allow all Raytec LED products to provide exceptionally long life - up to 10 years.

### SMT (Surface Mount Technology)

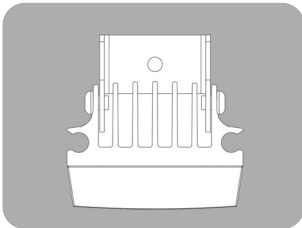
The future of lighting is surface mount LED technology. Compared to standard through hole LED's, surface mount LED's are a more robust solution increasing reliability and improving product life. They are also far more efficient at the dissipation of heat allowing the LED's to run at higher power and achieve significantly improved performance.

## 5 YEAR WARRANTY

All Raytec CCTV illuminators are provided with a 5 year warranty, unmatched anywhere in the CCTV lighting industry. Raytec illuminators provide guaranteed long life!



## TECHNICAL SPECIFICATIONS

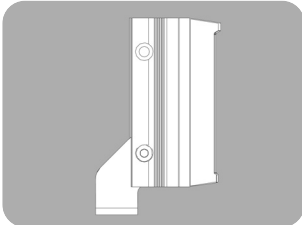


#### ILLUMINATOR

*Max Distance:* Up to 20m (65ft)  
*Angle:* 30, 50 or 120 degrees  
*Optics:* SMT LED's  
*Consumption:* 10W max  
*Voltage:* 13.5V current controlled  
*Weight:* 1.0kg  
*Environmental:* IP66  
*Temp Range:* -20 to +40°C (0 to 105°F)  
*Cable Length:* 2.5m  
*Colour:* Black  
*Wavelength:* 850 or 950nm  
*Dimensions:* 75 x 100 x 54mm

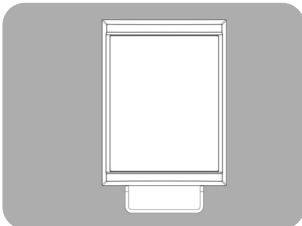
#### POWER SUPPLY

**PSU Included**  
*Input:* Universal 100-240V AC auto-sensing  
*Output:* 10W max  
*Temperature:* -20 to +40°C (0 to 105°F)  
**PSU Features:**  
 Adjustable Photocell  
 Adjustable power output for IR  
 Telemetry Control



#### BRACKETRY

U Bracket included

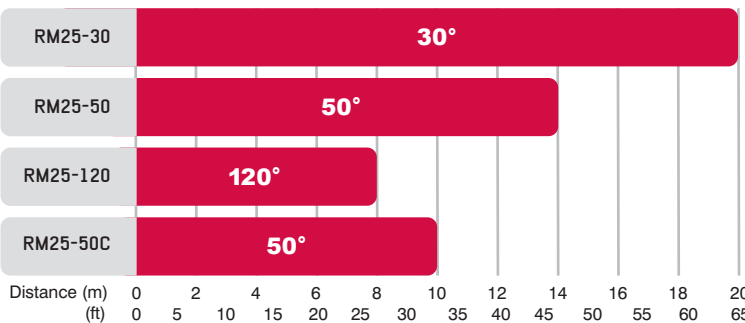


#### PART CODES

RM25-30 RAYMAX 25, 30°, 850nm + PSU  
 RM25-50 RAYMAX 25, 50°, 850nm + PSU  
 RM25-120 RAYMAX 25, 120°, 850nm + PSU  
 RM25-50-C RAYMAX 25, 50°, 950nm + PSU

Other models available on request.

### RAYMAX 25 ILLUMINATION DISTANCES



N.B Maximum distance is dependant upon camera/lens performance.

### ALL RAYMAX DISTANCES

		METRES		FEET	
		Narrow	Wide	Narrow	Wide
RAYMAX 200	RM200-AI-10	249	200	817	656
	RM200-AI-30	160	106	525	346
	RM200-AI-50	112	74	367	243
	RM200-AI-120	64	42	210	139
RAYMAX 100	RM100-AI-30	80	53	262	173
	RM100-AI-50	56	37	184	121
	RM100-AI-120	32	21	105	69
RAYMAX 50	RM50-AI-30	40	26	131	87
	RM50-AI-50	28	18	92	61
	RM50-AI-120	16	11	52	35
RAYMAX 25	RM25-30	20	non AI		66
	RM25-50	14	non AI		46
	RM25-120	8	non AI		26