

RAYTEC PRODUCTS AT A GLANCE 2008

now including

PLATINUM[®]

technology

rayTEC[®]

AT A GLANCE 2008

www.raytecctv.com

PRODUCT RANGE AT A GLANCE

RAYMAX INFRA-RED

300 SERIES



Up to 370m (1,214ft)

200 SERIES



Up to 300m (985ft)

150 SERIES



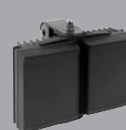
Up to 183m (600ft)

100 SERIES



Up to 150m (492ft)

50 SERIES



Up to 75m (246ft)

25 SERIES



Up to 20m (66ft)

STANDARD
PLATINUM

Boosts distance by up to 25%

RAYLUX WHITE-LIGHT

300 SERIES



Up to 240m (787ft)

200 SERIES



Up to 200m (656ft)

150 SERIES



Up to 150m (492ft)

100 SERIES



Up to 120m (394ft)

50 SERIES



Up to 60m (197ft)

25 SERIES



Up to 20m (66ft)

POWERED BY
PLATINUM[®]
AS STANDARD

HYBRID WHITE-LIGHT & INFRA-RED

300 SERIES



Infra-Red and White-Light Combination Dependant

200 SERIES



150 SERIES



VOYAGER 2 NUMBER/LICENCE PLATE CAPTURE

VOYAGER 2



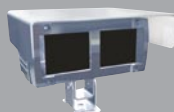
Up to 40m (131ft)

VOYAGER 2
DUAL



Up to 40m (131ft)

VOYAGER 2
LITE



Up to 18m (59ft)

POWERED BY
PLATINUM[®]
AS STANDARD



Benchmark
Recommended

IFSEC Finalist

PSI 'Best of 2007'

WHY RAYTEC?

INNOVATION + ILLUMINATION

Raytec manufacture a complete range of lighting solutions for professional CCTV installers – both Infra-Red and White-Light. We also integrate our lighting solutions together with cameras for specialist applications such as Number Plate / Licence Plate Recognition (LPR).



ADAPTIVE ILLUMINATION™

Designed for RAYMAX Infra-Red and RAYLUX White-Light illuminators, Adaptive Illumination™ allows the installer to adjust the angle of the light projection from a single unit to fit the specific demands of any installation. Adjustment is quick and convenient and any angle up to 180 degrees (depending on model) is easily selectable. Adaptive Illumination is patent pending technology available exclusively from Raytec.



COOL RUNNING™ Thermal Management System

Cutting edge materials science techniques have been employed to maximise thermal efficiency throughout the unit. Cool Running™ is specifically designed to allow all Raytec LED products to provide exceptionally long life - up to 10 years.



SMT (Surface Mount Technology)

The future of lighting is surface mount LED technology. Compared to standard through hole LED's, surface mount LED's are a more robust solution increasing reliability and improving product life. They are also far more efficient at the dissipation of heat allowing the LED's to run at higher power and achieve significantly improved performance.



VANDAL RESISTANT

The polycarbonate lens design protects against severe blows from crowbars, baseball bats and can even withstand shots from air pistols and rifles (range dependant).



ENERGY SAVING

All Raytec illuminators use high efficiency LED's and advanced control methods to deliver extremely low electrical consumption. Raytec illuminators are energy saving and deliver huge savings in running costs compared to traditional bulb illuminators together with zero maintenance.



HIGH DEFINITION LIGHTING

High Definition Lighting allows cameras to provide crystal clear, high signal images during the hours of darkness. The breakthrough in HD lighting is made possible with Raytec's high power LED technology delivering increased power on scene. High definition cameras require high definition lighting.

PLATINUM⁶

FOR ULTIMATE PERFORMANCE

Platinum is setting new standards in CCTV Lighting - Raytec have chosen the most powerful LEDs, used the best thermal materials and heatsinking technology together with dedicated, high quality, miniature optics to create the most powerful, versatile range of illuminators available in the market today.

Combined with Raytec's Adaptive Illumination technology (patent pending), the Platinum range delivers class leading performance, flexibility and reliability.

WHY GO PLATINUM?

POWERFUL

- Longest Range - 750m+ (2,460ft)

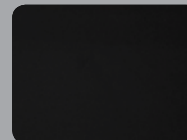
FLEXIBLE

- Widest Angle - 180 degrees

RELIABLE

- Longest Life - 10 years

Long Range... Up to 750m (2,460ft)



Wide Angle... Perfect for Domes



White-Light... Low energy, Ultra Long Life



rayMAX INFRA-RED

All Raytec illuminators incorporate the very latest surface mount Light Emitting Diode (LED) technology to deliver excellent night time pictures, with class leading performance and outstanding reliability.

IR - OFF



Product: RM200-AI-10

IR - ON



Distance: 160m+ (524ft)

IR - OFF



Product: RM200-AI-10

IR - ON



Distance: 150m+ (492ft)



WHY RAYMAX?

NO LIGHT = NO PICTURE

RAYMAX Infra-Red illuminators are designed to work in conjunction with B&W or Day and Night Cameras providing a light invisible to the human eye but visible to the CCTV camera.

KEY FEATURES

- Adaptive Illumination™
- Latest Surface Mount LED Technology
- Cool Running™ Thermal Management
- Angles from 10° to 180° +
- Vandal Resistant
- Low Running Cost
- Zero Maintenance



APPLICATIONS

WATER RESERVOIRS



INDUSTRIAL PARK



POWER PLANTS



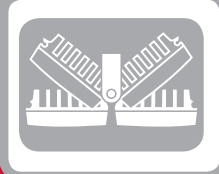
HIGH END RESIDENTIAL



DOMES SYSTEM



360° Illumination

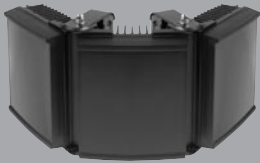


DESIGNED FOR DOMES

Raytec Adaptive Illumination is perfect for Domes, with wide angle option up to 180 degrees.

PLATINUM[®]

**PLATINUM option available on RM300, RM200, RM150
Boosts distance by up to 25%**



RAYMAX 300
Distance > 370m (1,214ft)



RAYMAX 200
Distance > 300m (985ft)



RAYMAX 150
Distance > 183m (600ft)



RAYMAX 100
Distance > 150m (492ft)



RAYMAX 50
Distance > 75m (246ft)



RAYMAX 25
Distance > 20m (66ft)

RAYMAX IN ACTION



RM300-AI-50 Perfect for Fully Functional Domes

WHY INFRA-RED?

NO LIGHT = NO PICTURE

- Invisible to the Human Eye
- No Light Pollution
- Long Distance illumination
- Designed for CCTV
- Low Running Costs
- Zero Maintenance
- Optimise Camera Performance



STANDARD PSU

- Adjustable Power
- Adjustable Photocell
- Telemetry Input

PREMIUM PSU

- As Standard Plus...
- 12V DC Output
- Photocell Following Contact
- Perfect for Day / Night Cameras

PREMIUM PLUS TIMER

- As Premium plus...
- Variable timer

PULSED PSU

- Synchronised LED Pulsing with camera
- 12V DC Output
- Adjustable Power

rayLUX WHITE-LIGHT

RAYLUX White Light illuminators incorporate Raytec's Platinum technology as standard delivering superior quick start, low energy, visible illumination perfect for CCTV lighting.

WL - OFF



Product: RL200-AI-10

WL - ON



Distance: 75m (246ft)

WL - OFF



Product: RL100-AI-50

WL - ON



Distance: 30m (98ft)



WHY RAYLUX?

NO LIGHT = NO PICTURE

RAYLUX illuminators are designed to work in conjunction with colour CCTV systems providing a visible White Light with accurate colour representation for the CCTV camera.

KEY FEATURES

- Accurate Colour Representation
- Adaptive Illumination™
- Latest Surface Mount LED Technology
- Cool Running™ Thermal Management
- Angles from 10° to 180° +
- Vandal Resistant
- Low Running Cost
- Zero Maintenance



APPLICATIONS

PRISONS



DUMPING



INDUSTRIAL PARK



POWER PLANTS



CAR PARK



LIGHTING ON DEMAND™



All RAYLUX units can be combined with detection technologies to deliver event driven illumination. Combine with PRT – Premium Timer PSU for timer control and deterrent lighting options.

PLATINUM[®]

All RAYLUX products are now powered by PLATINUM technology



RAYLUX 300
Distance > 240m (787ft)



RAYLUX 200
Distance > 200m (656ft)



RAYLUX 150
Distance > 150m (492ft)



RAYLUX 100
Distance > 120m (394ft)



RAYLUX 50
Distance > 60m (197ft)



RAYLUX 25
Distance > 20m (66ft)

RAYLUX IN ACTION



WHY WHITE-LIGHT?

NO LIGHT = NO PICTURE

- Optimise Colour Camera Performance
- Achieve Accurate Colour even at Night
- Visible Deterrent to Deter the Criminal
- Quick Start
- Designed for CCTV
- Low Running Costs
- Zero Maintenance
- Can be Multi Purpose



STANDARD PSU

- Adjustable Power
- Adjustable Photocell
- Telemetry Input

PREMIUM PSU

- As Standard Plus...
- 12V DC Output
- Photocell Following Contact
- Perfect for Day / Night Cameras

PREMIUM PLUS TIMER

- As Premium plus...
- Variable timer

PULSED PSU

- Synchronised LED Pulsing with camera
- 12V DC Output
- Adjustable Power

VOYAGER 2 - ANPR/LPR CAMERA

All Voyager systems are designed to capture images of the number plate 24 hours a day without any need for adjustment or re-calibration. This includes both bright sunlight and night-time operation.

TRADITIONAL CAMERA



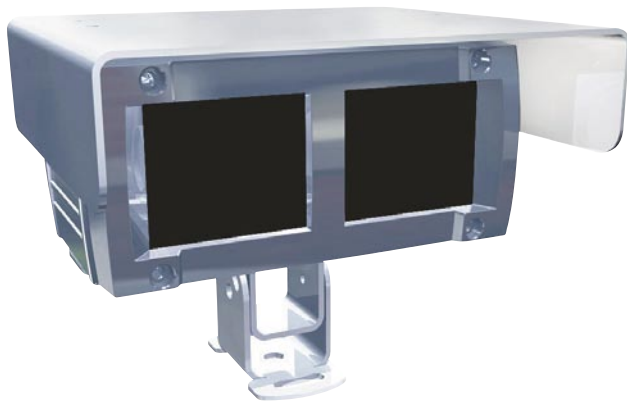
VOYAGER 2



WHY VOYAGER?

KEY FEATURES

- 24 hr images of number / licence plate
- Purpose designed for ANPR/LPR
- Speeds up to 100 mph+ (165 kmh)
- Distances up to 40m+ (131ft)
- Ray-Vision™ Filtering System
- Intelligent Flash
- Dynamic Overview Camera (optional)
- Platinum SMT Technology



Model shown Voyager 2 Lite

APPLICATIONS

TOLLS



CONGESTION



GATED COMMUNITY



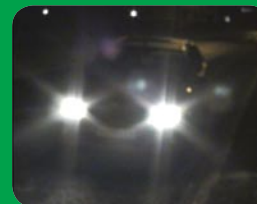
SECURITY



PARKING



VOYAGER DUAL WITH DYNAMIC OVERVIEW



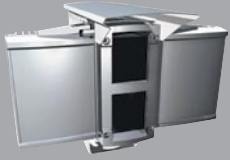
TRADITIONAL OVERVIEW



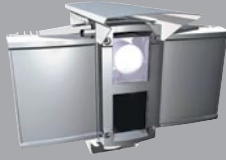
NIGHT TIME VOYAGER OVERVIEW

PLATINUM[®]

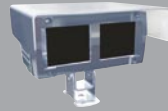
All VOYAGER products are now powered by PLATINUM technology



VOYAGER 2
Capture up to 40m (131ft)



VOYAGER 2 Dual
Capture up to 40m (131ft)



VOYAGER 2 LITE
Capture up to 18m (98ft)



Leading ANPR software companies have approved Voyager 2 hardware for use with ANPR/LPR software.

VOYAGER IN ACTION

WHY NUMBER/LICENCE PLATE CAPTURE?



- Increase effectiveness of the CCTV system
- Post event identification of vehicle on scene
- Perfect partner for ANPR Software

PLATINUM[™]
INSIDE

PLATINUM ADVANCED SMT LED TECHNOLOGY

PLATINUM illuminators integrate cutting-edge SMT LED technology, light intensification miniature optics and an enhanced Cool Running[™] thermal management system into a single high performance LED. The result is World leading power, reliability and flexibility.

24 HOURS

24-HOUR NUMBER PLATE CAPTURE

All Voyager systems are designed to capture images of the number plate 24 hours a day without any need for adjustment or re-calibration. This includes both bright sunlight and night-time operation.



RAY-VISION[™] FILTERING SYSTEM

Designed specifically for Voyager ANPR systems, RAY-Vision[™] employs cutting edge optics techniques to reduce the impact of bright sunlight and achieve high levels of ambient light rejection. RAY-Vision[™] is optically matched to PLATINUM Infra-Red technology in-built into all Voyager systems.



INTELLIGENT FLASH

The in-built PLATINUM lighting technology is pulsed and synchronised with the camera to provide optimal images of the number plate. Pulsing the light intensifies the power output, further extends LED life and allows lower power consumption.

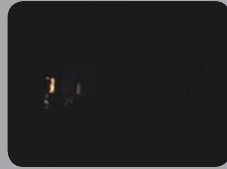
HYBRID

The World's first range of combined IR and White-Light illuminators designed for the CCTV market. HYBRID™ integrates RAYMAX and RAYLUX technologies to deliver constant covert surveillance and long coverage distances with Infra-Red light, and a visible White-Light deterrent on alarm or activation.



Daytime Scene

NO ILLUMINATION



Night Scene

HYBRID IR ON (NO EVENT)



Night Scene

HYBRID WL ON



Night Scene



WHY HYBRID?

NO LIGHT = NO PICTURE

KEY FEATURES

All standard features plus:

- Infra-Red for covert surveillance
- White-Light for deterrent
- Quick start on event



WHY HYBRID?

HYBRID illuminators have been designed for all applications where both the advantages of **Infra-Red (long illumination distances, covert surveillance)** and **White-Light (lighting as a visible deterrent, colour images)** are needed. The Infra-Red light in HYBRID provides constant covert lighting of an area, delivering 24 hour CCTV coverage without causing light pollution or illuminating an area for criminals or intruders. The White-Light in HYBRID can be activated on intrusion into a secure zone creating a bright, visible lighting deterrent to any intruders who will know they are being watched the moment the light turns on.

SPECIALIST PRODUCTS

Raytec are committed to innovation in illumination and manufacture a range of specialist low energy LED solutions.

LOW VOLTAGE



Raytec RAYMAX and RAYLUX product are now available in Low Voltage. Low Voltage PSU's include all the advantage and features of Raytec High Voltage range.

EXPLOSION PROOF



ATEX component certified Ex'd' Low voltage RAYMAX and RAYLUX Lighting for Hazardous Environments. Call for more details. (Available Q2 2008.)

IP LIGHTING™



IP Lighting™ is Raytec's dedicated range of RAYMAX and RAYLUX products that are designed to be powered direct from your existing IT network (PoE enabled) using CAT5 or CAT6 cabling. Currently available on the RM25 and RL25 series.

Contact us for Specialist Applications Including...

MACHINE VISION



PETROCHEMICAL



MARINE



TRANSPORT



LIGHTING FOR SOLAR TECHNOLOGY

Raytec are committed to Innovation in the field of illumination. Raytec now supply a range of IR and WL illuminations specifically designed for use with solar technology.



Illumination for any CCTV application



INFRA-RED
LED



WHITE-LIGHT
LED



HYBRID IR &
WHITE-LIGHT



NUMBER/LICENCE
PLATE CAPTURE

rayTEC[®]

UK / Europe
T: +44 (0) 1670 528446
F: +44 (0) 1670 528447
sales@rayteccctv.com

North America
T: +1 281-438-3599
F: +1 281-835-5777
ussales@rayteccctv.com
www.rayteccctv.com



FREE
Lighting Support Pack

Need more information? The Raytec pack includes a comprehensive guide to the Raytec lighting product range and the complete guide to CCTV lighting, plus the Raytec DVD with host of useful footage, images and supporting documents.